



Lindsey Street, Epping, CM16

BUTLER & STAG



**Guide Price £425,000 -
£450,000**

Enviably positioned in a sought after location, is this delightful semi-detached three bedroom Victorian cottage located less than half a mile from Epping High Street and tube station.



Freehold

- Semi Detached Family Home
- Three Bedrooms
- Large Lounge
- Off Street Parking
- Downstairs Bathroom
- South Facing 90' Rear Garden

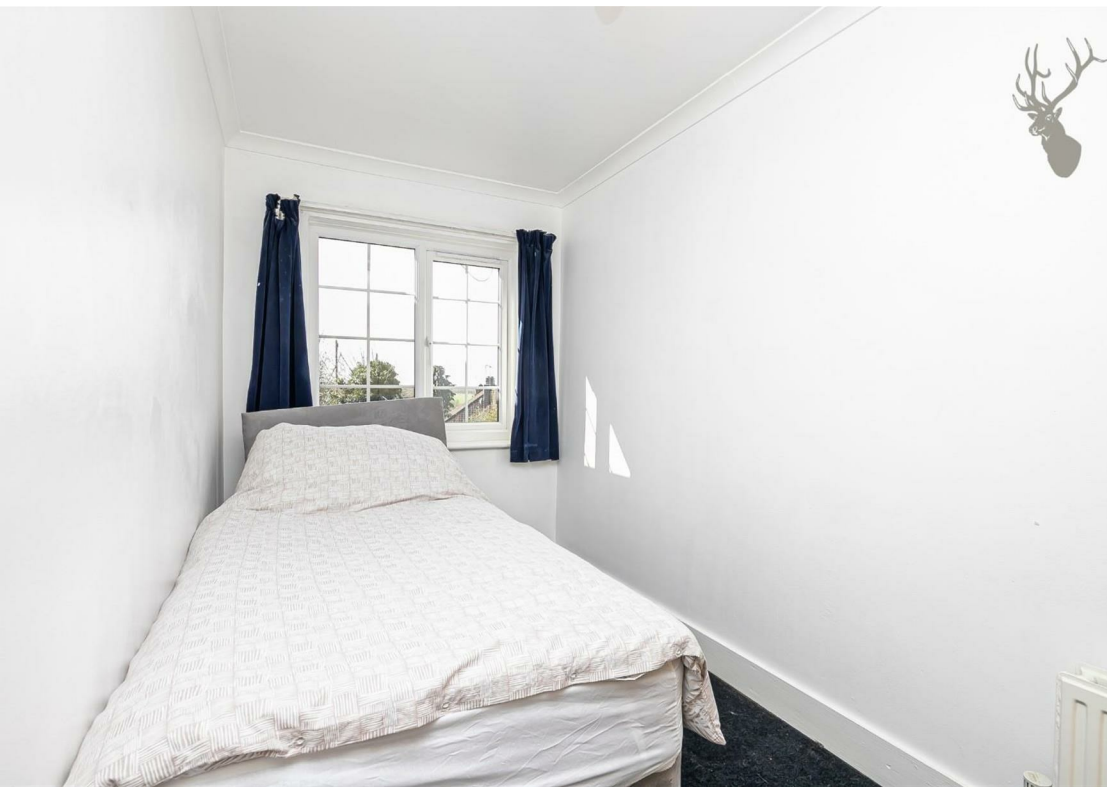
The accommodation is split over two floors with the ground floor comprising a good size lounge/dining room, fitted kitchen and downstairs bathroom, then the first floor comprising three double bedrooms

Externally, there is off street parking to the front and a south facing 90' private rear garden.

Lindsey Street offers a beautiful setting to live adjacent to open countryside and yet only a short distance from everyday shopping facilities, restaurants and bars found on Epping High Street.

Epping, an old market town, has an excellent choice of local independent and boutique shops together with a Tesco and Marks and Spencer. An underground Central Line rail service runs from Epping to London Liverpool Street making it ideal for the city commuter. There are well revered schools in Epping, Chigwell, Loughton and Woodford. For the commuter there is ready access to the M11 (junction 5) leading to Canary Wharf and M25 (junction 26).



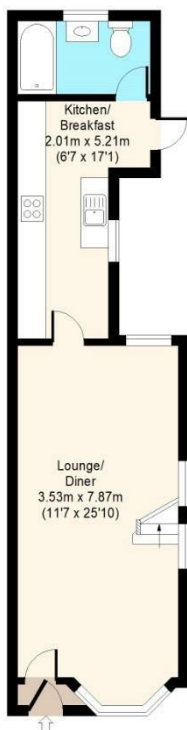


Lindsey Street



Ground Floor

Approx. 44 Sq. meters (474 Sq. feet)



First Floor

Approx. 32 Sq. meters (344 Sq. feet)



Total area: approx. 76 Sq. meters (818 Sq. feet)
For illustration purposes only - not to scale
www.ipaplus.com

IMPORTANT NOTICE - These particulars have been prepared in good faith and they are not intended to constitute part of an offer or contract. We have not performed a structural survey on this property and the services, appliances and specific fittings have not been tested. All photographs, measurements, floor plans and distances referred to are given as a guide and should not be relied upon.

BUTLER & STAG

☎ 01992 667666

🏠 4 Forest Drive, Theydon Bois, Essex, CM16 7EY

✉ theydon@butlerandstag.com

www.butlerandstag.uk